

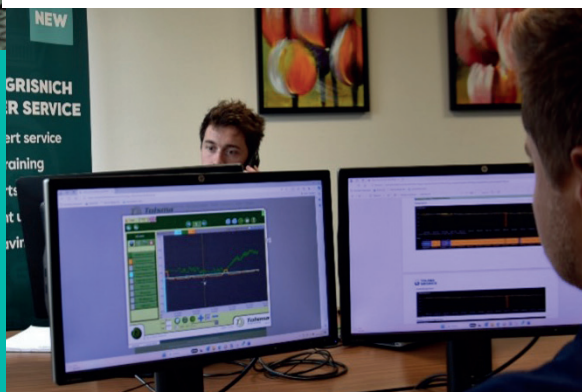
# CUSTOMER SERVICE

With personalized (online) storage advice to achieve higher storage efficiency



Discover the benefits of our Tolsma Alert service packages, which elevate storage to a higher level. A dedicated team of storage specialists is ready to support and guide you throughout the entire storage season.

- Optimize product quality
- Optimize energy consumption
- Daily monitoring
- Weekly reporting
- Alert for error messages



Tolsma-Grisnich B.V.

Fabrieksweg 7, 8304 AT Emmeloord, the Netherlands

T +31 (0)527 63 64 65 • E [info@tolsmagrisnich.com](mailto:info@tolsmagrisnich.com)

THINKING AHEAD → [TOLSMAGRISNICH.COM](https://tolsmagrisnich.com)

## Smart settings for optimal results with customized service packages

Get more out of the Vision Control by smart setting. Not only does it optimize product quality, but it also minimizes energy consumption for a sustainable storage process. Inquire about tailored service packages!

## Continuous monitoring

Benefit from daily monitoring during office hours to quickly respond to changing conditions. With Tolsma Alert, you are assured of continuous attention to your storage.

## Proactively identifying malfunctions

Installation malfunctions are identified before they become problematic. By proactively identifying issues, Tolsma Alert ensures the reliability of your storage system.



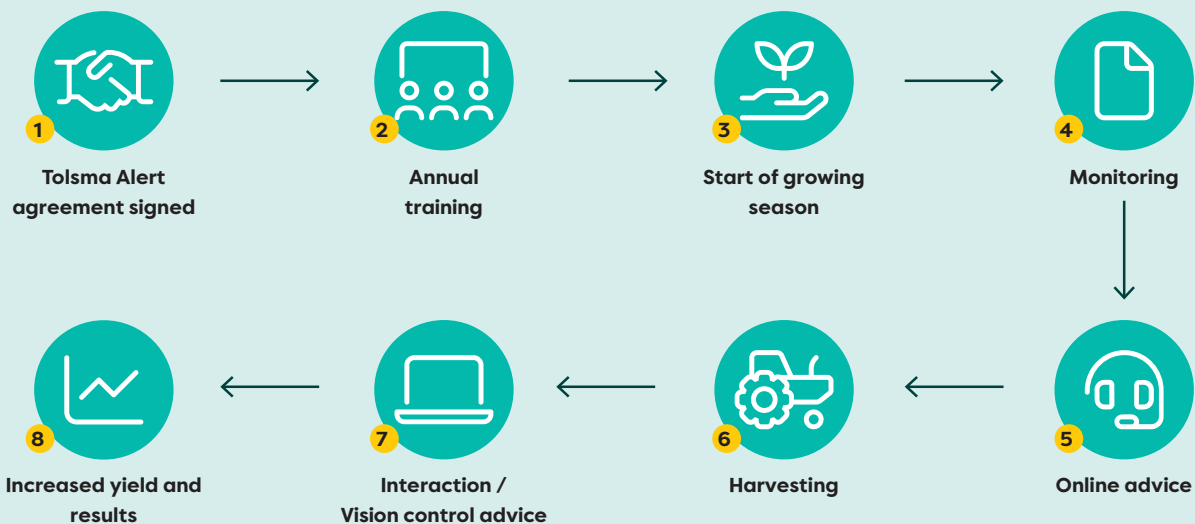
## Vision Control software updates

Stay up-to-date with the latest features and improvements through regular Vision Control software updates. Benefit from the latest technological advancements.

## Fast access to spare parts

Tolsma Alert provides fast access to our spare parts department. Minimize downtime and maximize the efficiency of your storage process with immediate support when needed.

### Customer service program in practice:



Subject to changes in construction and implementation and printing errors.



**Tolsma-Grisnich B.V.**

Fabrieksweg 7, 8304 AT Emmeloord, the Netherlands

T +31 (0)527 63 64 65 • E [info@tolsmagrisnich.com](mailto:info@tolsmagrisnich.com)