

FANS

Energy-efficient fans



- Suitable for box and bulk storage
- Energy-efficiency through sustainable design
- Low noise fans
- Specifically designed for the storage of potatoes and onions
- Developed in-house



Tolsma-Grisnich B.V.

Fabrieksweg 7, 8304 AT Emmeloord, The Netherlands

T +31 (0)527 63 64 65 • E info@tolsmagrisnich.com

FAN CAPACITY TABLES

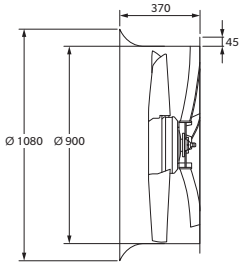
- Air density ($\rho=1.2 \text{ kg/m}^3$)
- Motor speed in min.⁻¹
- Sizes in mm

Test reports for each model according to DIN 24163 available on demand.

ACM FANS

- Noise level up to 36% lower
- Up to 35% lower speed

- Air output up to 7% higher
- Standard speed regulation
- Energy efficient
- Fan with 7 lightweight blades

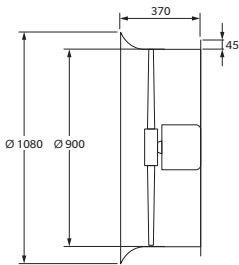


Model	n=	Free air output	Air output in m ³ / hour Static pressure in Pa.			Power consumption in KW
			150	250	350	
ACM 9.22	1,000	32,450	26,250	-	-	2.2
ACM 9.30	1,100	35,550	30,650	24,850	-	3.0
ACM 9.40	1,280	41,950	37,500	33,300	28,100	4.0

TTV HE FANS

- EC motor
- Developed with CFD technology

- Higher air output at lower static pressures (box storage)
- 15% higher air output at 150 Pa
- Lower noise levels (3-5 dB)
- Aerodynamic motor supports
- Fan with 6 lightweight blades

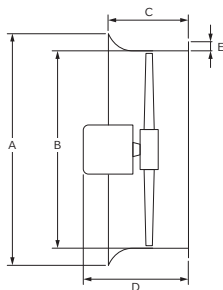


Model	Free air output	Air output in m ³ / hour Static pressure in Pa. n= 1,500			Power consumption in KW
		100	150	200	
TTV9.22HE	34,640	30,730	27,900	25,110	2.2
TTV9.30HE	36,740	32,500	30,170	27,210	3.0
TTV9.40HE	40,220	36,250	33,900	31,400	4.0

TTR FANS

- Enclosed, top-quality motor with maintenance-free bearings

- Available with AC and EC motor
- Widely applicable
- Fan with 9 or 12 lightweight blades



Dimensions	Ø A	Ø B	C	D	D**	E
Model						
TTR5.075	625	500	275	335		45
TTR6.15	700	600	285	390		45
TTR7.22*	880	700	370	400	405	45
TTR8.22	980	800	370	400	405	45
TTR8.30*	980	800	370	400	405	45
TTR8.40	980	800	370	420	370	45
TTR9.22*	1,080	900	370	400	405	45
TTR9.30*	1,080	900	370	400	405	45
TTR9.40*	1,080	900	370	420	370	45
TTR9.55*	1,080	900	370	500	370	45
CIRC/WS	590	510	460	460		

Model	Free air output	Air output in m ³ / hour Static pressure in Pa. n= 1,500			Power consumption in KW
		150	250	350	
TTR5.075	10,700	7,600	3,000		0.75
TTR6.15	18,700	14,900	8,200		1.5
TTR7.22*	25,300	21,600	15,450	10,900	2.2
TTR8.22	28,300	24,100	20,800	15,100	2.2
TTR8.30*	32,300	27,800	23,600	17,600	3.0
TTR8.40	34,800	31,800	29,500	26,400	4.0
TTR9.22*	29,200	26,250	24,200	21,200	2.2
TTR9.30*	33,300	29,300	26,750	24,000	3.0
TTR9.40*	39,400	35,600	33,300	29,650	4.0
TTR9.55*	44,400	41,300	37,400	33,600	5.5
CIRC/WS	8,350				0.37 + (1.5)

*also available with EC motor **applies to fan with EC motor

Subject to changes in construction and implementation and printing errors.



Tolsma-Grisnich B.V.

Fabrieksweg 7, 8304 AT Emmeloord, The Netherlands

T +31 (0)527 63 64 65 • E info@tolsmagrisnich.com